

BTS HUNTER®

THE EASY WAY TO UNCOVER SUSPICIOUS CELLULAR NETWORK ACTIVITY



MOBILE NETWORK LANDSCAPE SAFETY IS IN YOUR HANDS. FROM MISCONFIGURED OPERATOR CELLS TO NETWORK SURVEILLANCE EQUIPMENT, BTS HUNTER IS THE ULTIMATE TOOL TO UNCOVER SUSPICIOUS ACTIVITY IN SURROUNDING CELLULAR NETWORKS. IT HELPS GOVERNMENT AND LAW ENFORCEMENT AGENCIES DETECT AND LOCATE USERS OF ILLEGAL MONITORING EQUIPMENT. IT ALSO ASSISTS MOBILE NETWORK PROVIDERS: WITH BTS HUNTER, THEY ARE ABLE TO EVALUATE THE USER-PERCEIVED PERFORMANCE OF THEIR NETWORK EQUIPMENT AND IMMEDIATELY IDENTIFY ANY MISCONFIGURATION. BTS HUNTER BENEFITS INDIVIDUALS AND ORGANIZATIONS AS WELL: THE PROVIDED INTELLIGENCE ALLOWS TO IDENTIFY THE PRESENCE OF ANY NETWORK MONITORING EQUIPMENT IN THE AREA AND ESTIMATE HOW SAFE IT IS TO COMMUNICATE RIGHT NOW.



ABOUT:

BTS HUNTER IS A SMARTPHONE-BASED CELLULAR NETWORK ANALYZER, IDENTIFYING SUSPICIOUS NETWORK ACTIVITY. IT PERFORMS REAL-TIME DETAILED ANALYSIS OF SURROUNDING GSM, UMTS, AND LTE NETWORKS TO DETECT NETWORK

ANOMALIES, MISCONFIGURATIONS OR PRESENCE OF MONITORING EQUIPMENT. BTS HUNTER COMES WITH A BUILT-IN CELL SEARCH CAPABILITY AND OFFERS A FULLY PASSIVE SCANNING OF A NETWORK ENVIRONMENT

FEATURES OVERVIEW

- Real-time analysis of surrounding GSM, UMTS and LTE networks
- Intelligent algorithm for detecting a presence of suspicious network activity using more than 75 parameters
- Built-in cell search capability, allowing to locate any cellular network transmitter
- A fully passive scan of surrounding cellular networks
- Plug-in directional antenna to improve cell search experience (optional)

TECHNICAL CHARACTERISTICS

Supported bands

EU Specification: GSM: 850/900/1800/1900 MHz
UMTS: 850/900/1900/2100 MHz
LTE:
FDD: 1, 3, 5, 7, 8, 20, 28
TDD: 38, 40, 41

US Specification: GSM: 850/900/1800/1900 MHz
UMTS: 850/1700/1900/2100 MHz
LTE:
FDD: 2, 3, 4, 5, 7, 13, 17

Device model	HTC One M9
Weight	157 g
Dimensions	144.6 × 69.7 × 9.6 mm
Battery life	Up to 15 hours in scanning mode

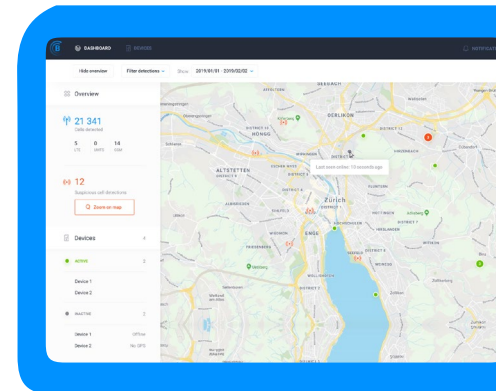
ACCESSORIES:

DIRECTIONAL ANTENNA

The directional antenna makes cell search more effective by quickly identifying the signal source direction. The accessory also features an extra built-in hardware module that allows the BTS Hunter to perform scanning while the search procedure is in progress.

BTS HUNTER WEB DASHBOARD

Web dashboard enables you to handle operations of multiple BTS Hunter devices in a single place. The monitoring center allows you to track and remotely control all devices at once, offers real-time alerts about suspicious network activity and provides an enhanced analysis of collected intelligence.



GMSOFT ADDRESS:
UNIT 1307, FORTUNE TOWER,
CLUSTER C,
JUMEIRAH LAKE TOWERS,
DUBAI, UAE

PHONE:
+971 4 431 9072
MAIL:
INFO@GMSOFT.COM

